

made  
in  
germany

**Elma**  
TECHSPAN®

Ultrasonics.Steam.Ultraclean.



Industry

## Elmasteam 4<sup>5</sup>

### Environment-friendly steam jet cleaning

- Professional 4.5 bar steam pressure with long steam availability due to high heat output
- Environment-friendly precleaning:  
Dirt and contaminations are removed without using any cleaning agents
- High reliability and long service life of the steam tank
- Quality product made by Elma, with 3 years warranty\*
- Compact design - space saving tabletop unit with wall brackets
- TÜV type approved according to DIN 61010-1 and CE-certified

Australia: [info@elma-ultrasonic.com.au](mailto:info@elma-ultrasonic.com.au) [www.elma-ultrasonic.com.au](http://www.elma-ultrasonic.com.au)  
New Zealand: [info@elma-ultrasonic.co.nz](mailto:info@elma-ultrasonic.co.nz) [www.elma-ultrasonic.co.nz](http://www.elma-ultrasonic.co.nz)

# Elmasteam 4<sup>5</sup> - the environment-friendly alternative

Large quantities of oil, lubricants, polishing pastes and swarf occur frequently in industry and in workshops due to the processing with machinery.

In order to clean the workpieces effectively, precleaning with steam is recommended. During the cleaning process with steam, no chemical cleaning agents are used. Thus the contaminations accrue as undiluted and concentrated as possible and less disposal costs occur.

This is the strength of steam jet cleaning. Due to the high temperature and high pressure, the steam removes the contaminations very efficiently and with no chemicals. For the fine cleaning, the parts and components can be further treated, e.g. in an Elmasonic ultrasonic bath.

Typical parts and components in industry and workshops: engine parts, tools and components from reconditioning cleaning.



## There are two versions of the Elmasteam 4<sup>5</sup> basic:

a. with fixed nozzle:

This allows working with both hands. Ideal for holding tools and other industrial components securely while removing even smallest dirt particles.

b. with flexible hand piece (HP) and 1.3 m hose:

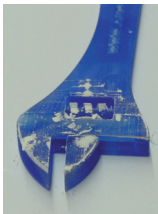
Using this, the part to be cleaned can be held securely (also with tweezers) and sprayed all-round quickly and effectively.



The hand piece fits well in the hand and has been designed for longer use in accordance with ergonomics principles. The valve is purely mechanical and thus very robust and with a long service life.

## Application examples before and after the cleaning

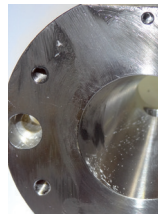
STL components



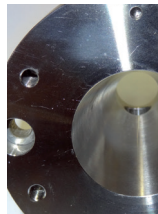
Removal of wax



Flange



Removal of grease and silicone



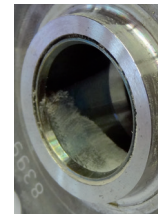
Gear drive



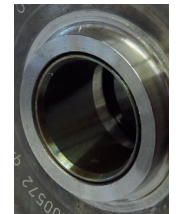
Removal of oil and swarf



Gear drive



Removal of polishing paste



With the Elmasteam 4<sup>5</sup> basic and basic HP, industrial contaminations such as pickling agents, adhesive wax and other residues can also be gently removed.

## Quality, reliability and safety

QUALITY and SAFETY are top priorities at Elma. This means, only tried and tested components and high quality materials are used.

The user is protected due to the high implemented safety standards by Elma and by the TÜV type approval according to DIN 61010-1. The "two-chamber-design" consistently separates the water-carrying and the electrical systems. The electrical area is thus protected against any leaks in the water-carrying system which significantly reduces the risk of unit failures.

The pressure tank with a filling volume of approx. 3.3 litres is cast from special material. The heating is integrated and emits its energy into the water over a large area. This increased radiation area reduces lime deposits when using mains water. However, the use of de-mineralised or distilled water is recommended.

By taking these measures and provided that the unit is being operated properly, the usual warranty can be increased to 3 years.

(Wear parts are not covered by the warranty.)



It is recommended that demineralised or distilled water is used, in order to significantly reduce the maintenance intervals. If mains water is used, regular rinsing out via the safety ball valve in accordance with the operating instructions must be performed using the rinsing set.

# The Elma cleaning concept

Due to their high performance, Elmasteam steam jet cleaners are used for precleaning before the cleaning with ultrasound or for intermediate cleaning in the manufacturing process.

Elmasteam steam jet cleaners are also used for rinsing. The steam is free of minerals and chemical agents; thus workpieces, engine parts and components are spotless after the drying.



## Technical data

Mains voltage (V)	220 - 240	Pressure tank volume (litres)	4.0
Mains frequency (Hz)	50 / 60	Max. filling volume (litres)	3.3
Max. power consumption (W)	2800	Operating pressure (bar)	4.5
Rated power at 230 V (W)	2130	Dimensions W x D x H (mm)	245 / 305 / 320
Case material	PC/ABS	Steam temperature in the tank (°C)	155
Weight empty (kg)	6.75	Steam temperature at the nozzle (°C)	135
Order numbers:			
Elmasteam 4 <sup>5</sup> basic with fixed nozzle and foot pedal	106 8874	Elmasteam 4 <sup>5</sup> basic HP with hand piece and 1.3 m hose	106 8907

The scope of delivery includes:



Tweezers · Sieve · Maintenance hose · Rinsing set · Tank cap with safety valve

Further accessories:



Wall bracket

\*3 years warranty for proper use in accordance with the operating manual. Wear parts are not covered by the warranty.



**Australia:** [info@elma-ultrasonic.com.au](mailto:info@elma-ultrasonic.com.au) [www.elma-ultrasonic.com.au](http://www.elma-ultrasonic.com.au)  
**New Zealand:** [info@elma-ultrasonic.co.nz](mailto:info@elma-ultrasonic.co.nz) [www.elma-ultrasonic.co.nz](http://www.elma-ultrasonic.co.nz)